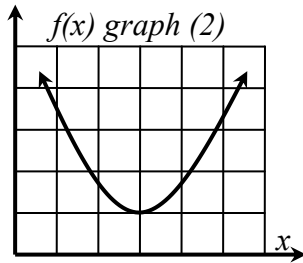
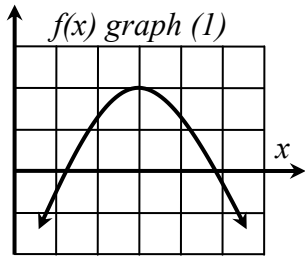


Class Drill 10: Match the Graph of f to the Sign Chart for f'

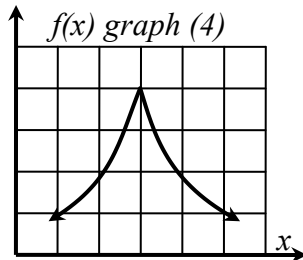
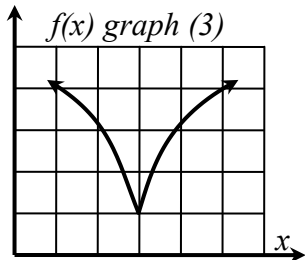


(a) $f'(x)$ $\xrightarrow{\text{-----} 0 \text{+++++}}$
 $x = 3$

Sign chart (a) matches graph _____.

(b) $f'(x)$ $\xrightarrow{\text{-----} \text{ND} \text{+++++}}$
 $x = 3$

Sign chart (b) matches graph _____.

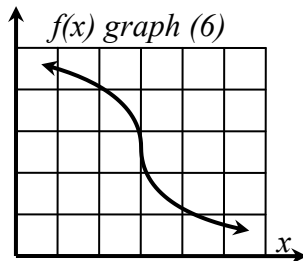
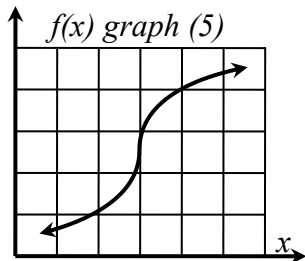


(c) $f'(x)$ $\xrightarrow{\text{+++++} 0 \text{+++++}}$
 $x = 3$

Sign chart (c) matches graph _____.

(d) $f'(x)$ $\xrightarrow{\text{+++++} \text{ND} \text{+++++}}$
 $x = 3$

Sign chart (d) matches graph _____.

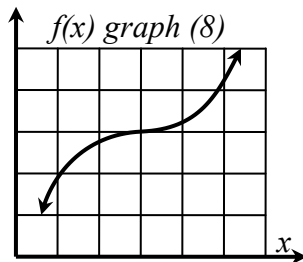
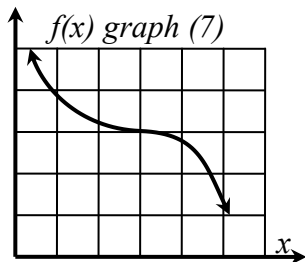


(e) $f'(x)$ $\xrightarrow{\text{+++++} 0 \text{-----}}$
 $x = 3$

Sign chart (e) matches graph _____.

(f) $f'(x)$ $\xrightarrow{\text{+++++} \text{ND} \text{-----}}$
 $x = 3$

Sign chart (f) matches graph _____.



(g) $f'(x)$ $\xrightarrow{\text{-----} 0 \text{-----}}$
 $x = 3$

Sign chart (g) matches graph _____.

(h) $f'(x)$ $\xrightarrow{\text{-----} \text{ND} \text{-----}}$
 $x = 3$

Sign chart (h) matches graph _____.