

# Lumbar Hernia

(lumbar triangle, Petit's triangle)

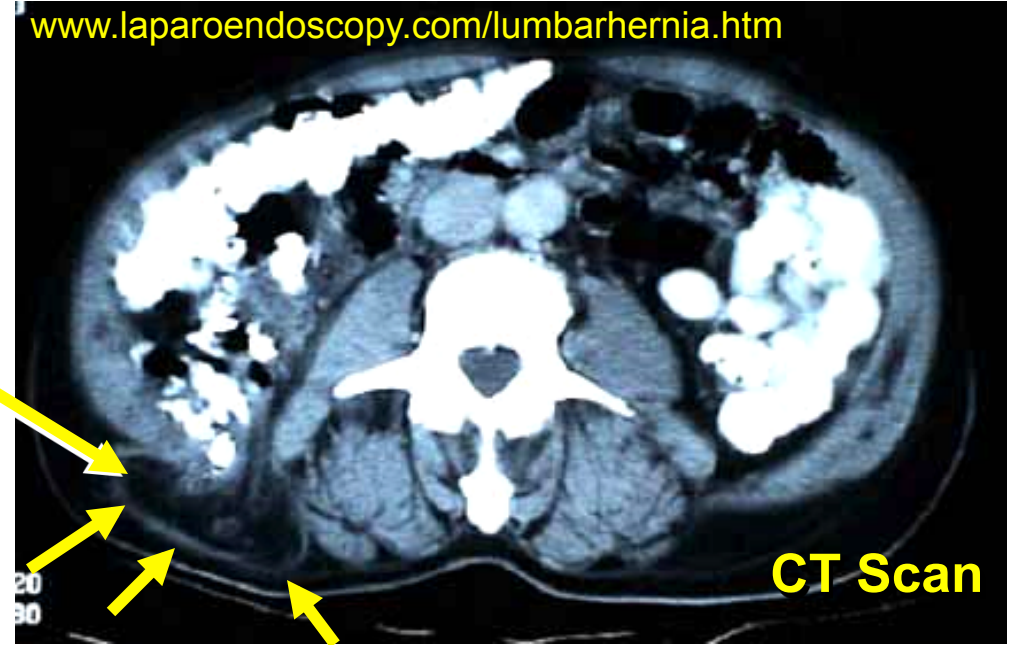
[www.indianpediatrics.net](http://www.indianpediatrics.net)

5-mo-old  
male



[www.laparoendoscopy.com/lumbarhernia.htm](http://www.laparoendoscopy.com/lumbarhernia.htm)

hernial  
sac



**CT Scan**

2006 Moore & Dalley COA

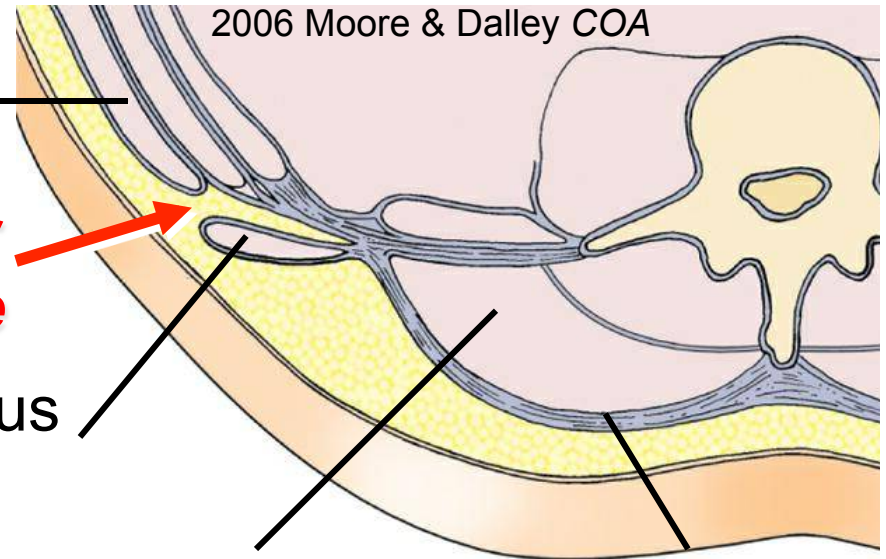
external  
oblique

***lumbar  
triangle***

latissimus  
dorsi

erector spinae

thoracolumbar fascia



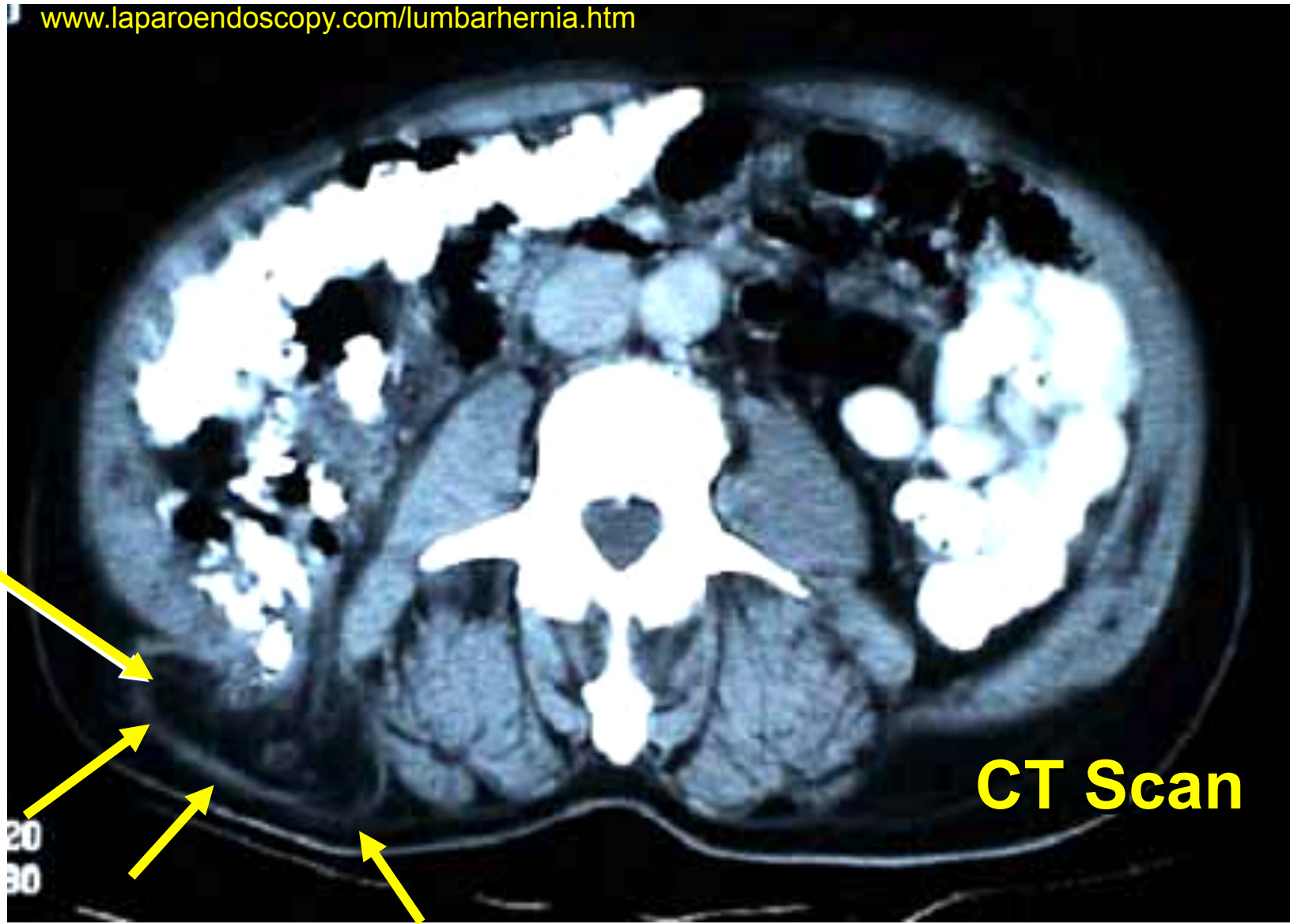
60-yr-old  
female



[www.bhj.org](http://www.bhj.org)

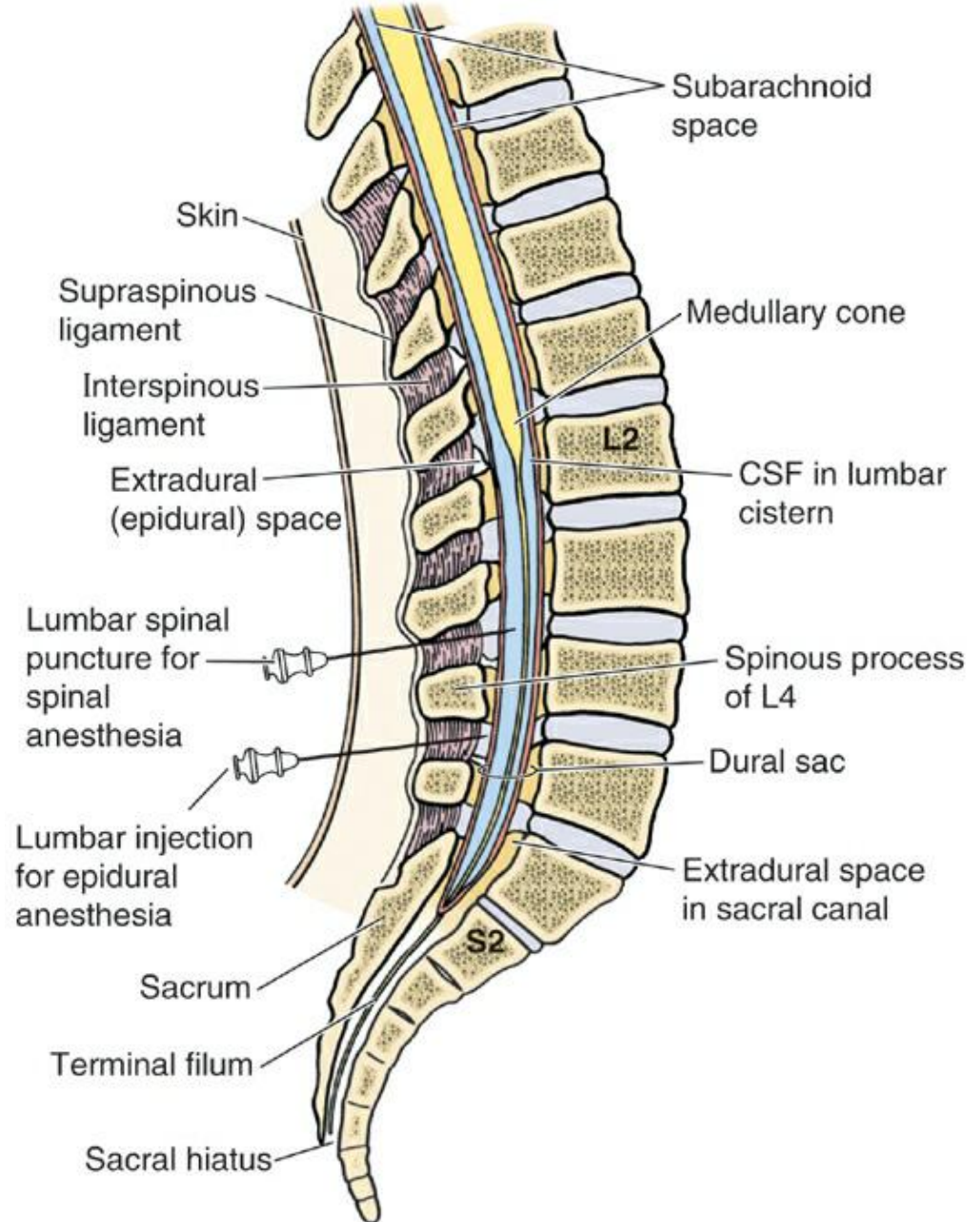
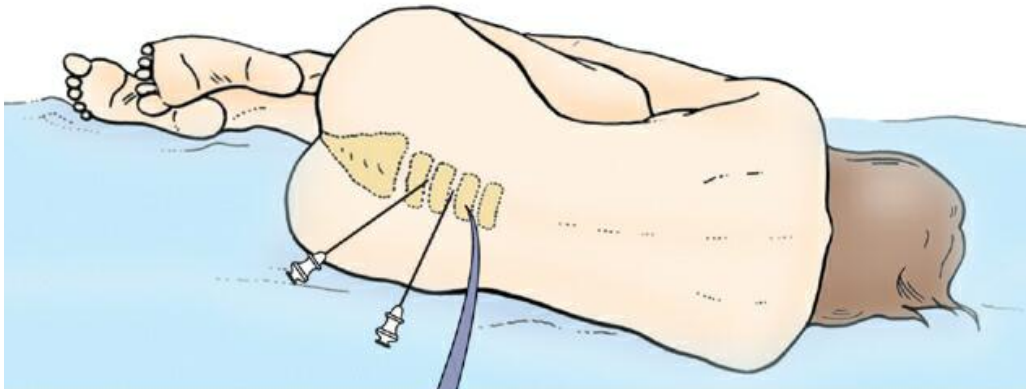
[www.laparoendoscopy.com/lumbarhernia.htm](http://www.laparoendoscopy.com/lumbarhernia.htm)

*hernial sac*



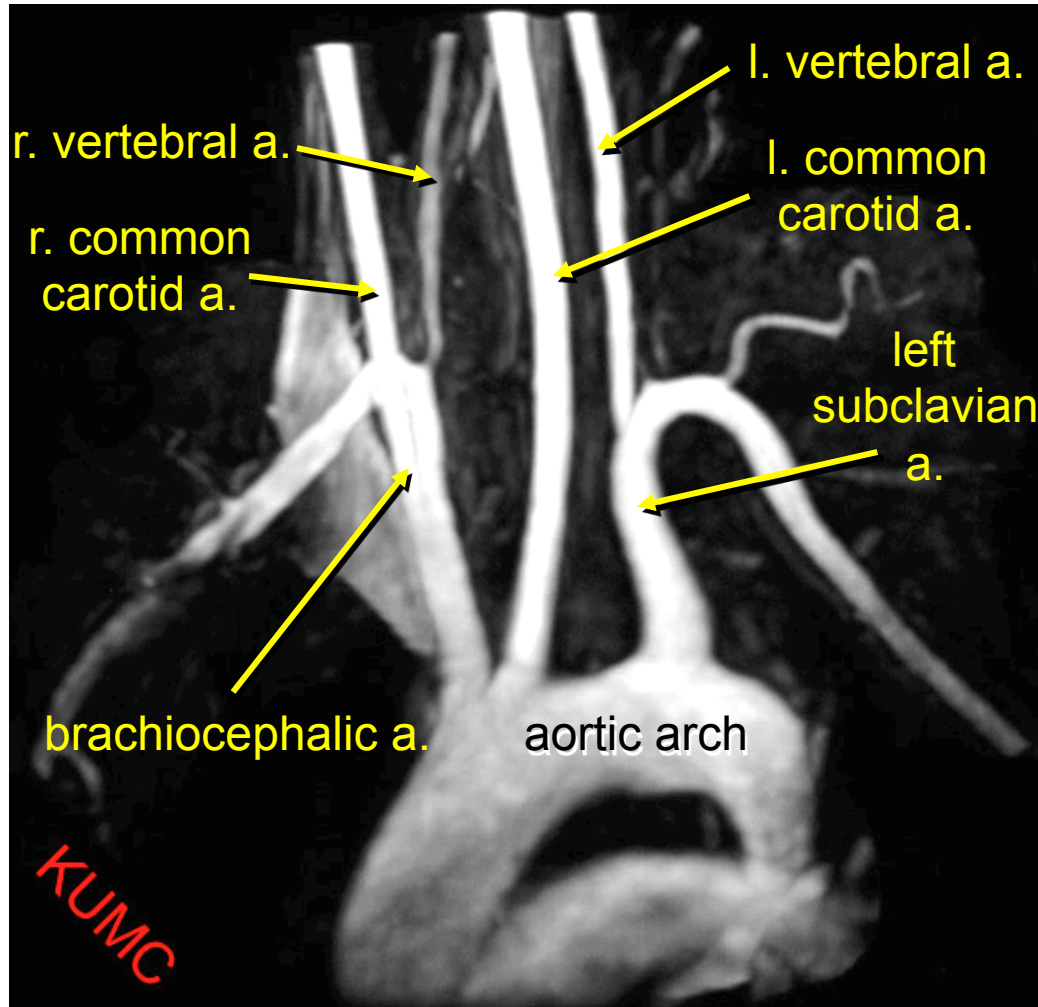
**CT Scan**

# Lumbar Puncture ("spinal tap")

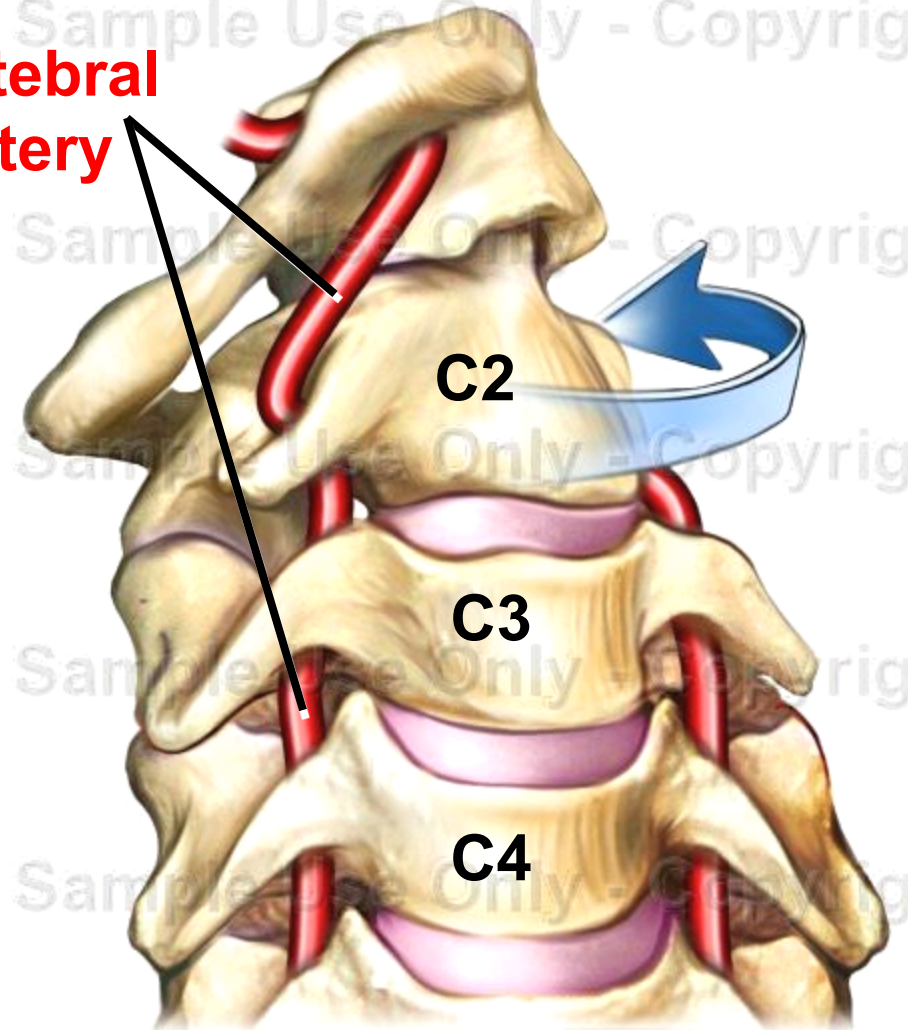


## Vertebral Artery

rotational insufficiency



vertebral  
artery



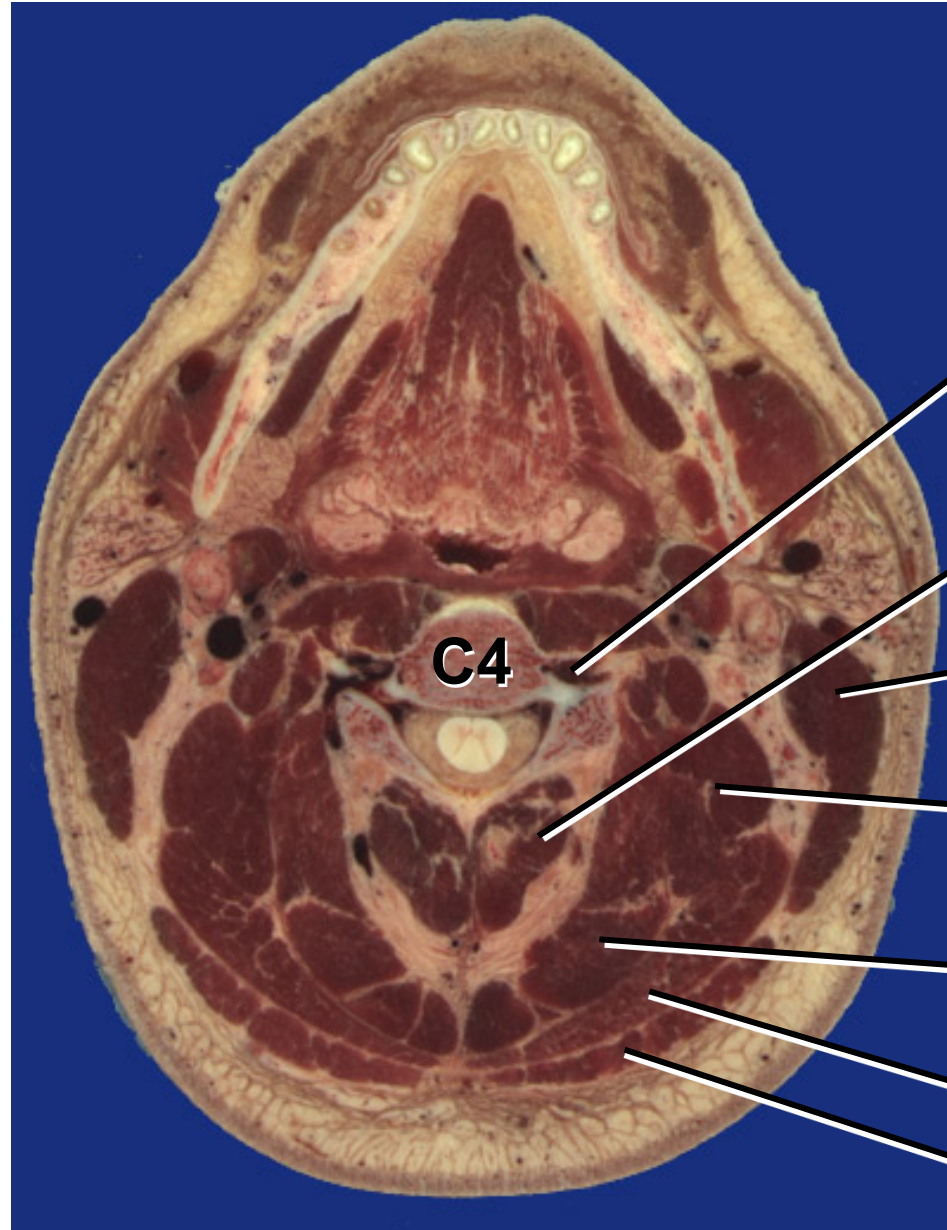
MRA — Magnetic resonance angiography  
[classes.kumc.edu/som/radanatomy/](http://classes.kumc.edu/som/radanatomy/)

doereport.com

# Vertebral Artery



[geocities.com/akramanatomy](http://geocities.com/akramanatomy)



**vertebral a.**

semispinalis  
cervicis

sternocleido-  
mastoid

splenius cervicis

semispinalis  
capitis

splenius capitis

trapezius

[www-medlib.med.utah.edu/WebPath](http://www-medlib.med.utah.edu/WebPath)