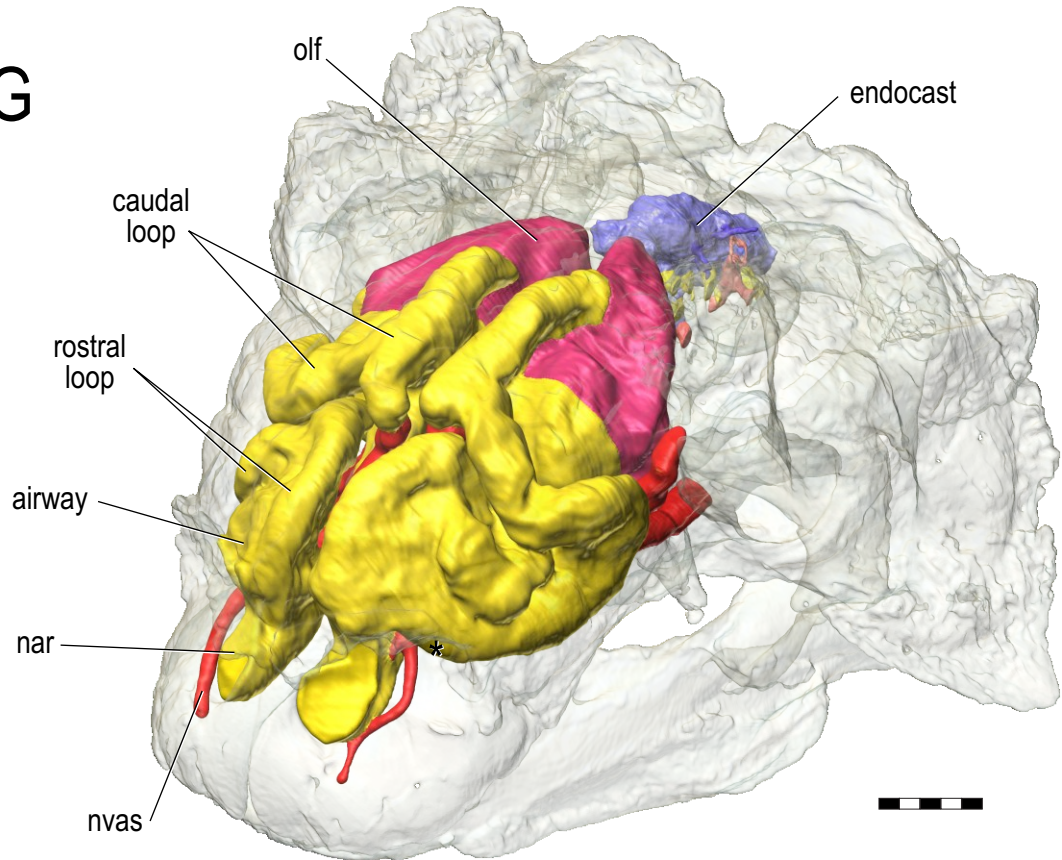
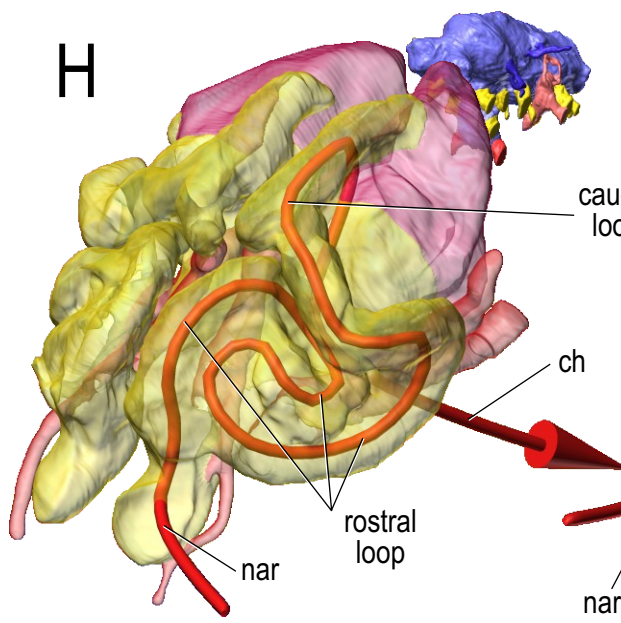


Fig. 8. Paranasal sinuses and other cephalic components of *Euoplocephalus tutus* (AMNH FR 5405) based on CT scanning followed by segmentation and 3D visualization. Bone is rendered semitransparent (except in **A**). **A**: Skull in left lateral view. **B**: Rostral view. **C**: Left lateral view. **D**: Dorsal view. **E**: Right side of sagittally sectioned head in medial view with soft-tissue components isolated. **F**: Ventral view. **G**: Left rostrorodorsolateral view. **H**: Isolated and semitransparent nasal cavity in left rostrorodorsolateral view, revealing the course of the nasal airway (arrow). **B**: Same in left lateral view. Scale bars = 5 cm.

G



H



I

